

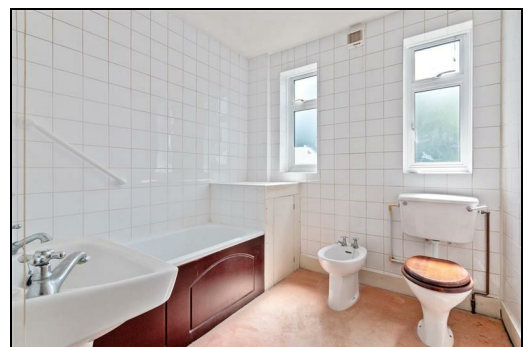
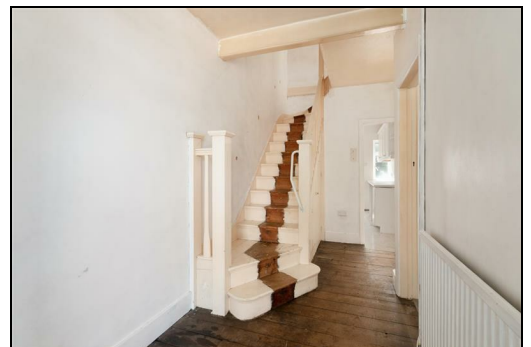
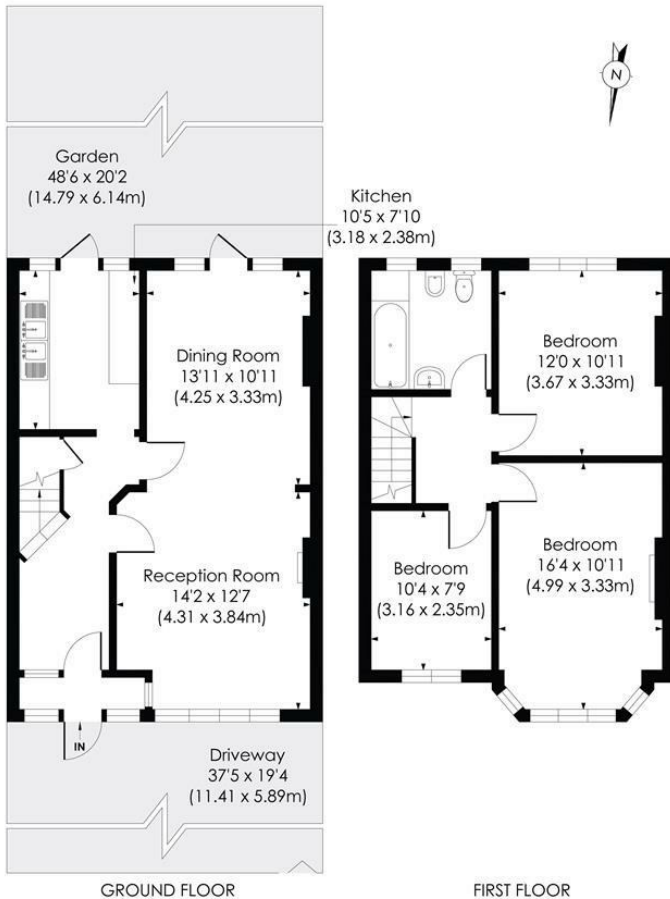
**Bushey Road
Raynes Park, SW20 0JN**

£635,000 Freehold



This spacious 1,054 sqft three double bedroom, unextended 1930s Blay House offers an exciting opportunity to create a wonderful family home, has a generous south-facing rear garden and is perfectly located only 0.2 Miles to Raynes Park High street and Station. Offering excellent potential for extension and modernisation (subject to the usual consents), the property provides a fantastic blank canvas for an incoming purchaser to design and finish to their own individual style and specification. The accommodation currently comprises a spacious through lounge, separate kitchen, three well-proportioned double bedrooms and a family bathroom. The property is offered to the market with no onward chain.

BUSHEY ROAD, SW20
 Approx. Gross Internal Floor Area
1054 Sq. ft/97.93 Sq. m



pixangle PROPERTY MARKETING
 This floor plan has been prepared for the purpose of illustration only in accordance with the latest RICS code of measuring practice and is not to scale. All measurements and areas are approximate and whilst every effort has been made to ensure the accuracy of the plan contained here, no responsibility is taken for any error, omission or misstatement.

- Three Double Bedroom
- 1930's Blay House
- 48'6 ft South Facing Garden
- 0.2 Miles To Raynes Park Station And High Street
- Requiring Modernisation
- Potential To Extend S.T.P.P
- No Onward Chain
- Double Glazing
- EPC - C
- Council Tax Band - D

Energy Efficiency Rating		Current	Potential
Very energy efficient - lower running costs			
(92 plus) A			
(81-91) B			
(69-80) C			
(55-68) D		69	79
(39-54) E			
(21-38) F			
(1-20) G			
Not energy efficient - higher running costs			
England & Wales		EU Directive 2002/91/EC	

For Free Mortgage Quote and Best Mortgage Rates, call Ellisons Mortgage Advisor on 0208 944 9595



Although these particulars are believed to be correct, their accuracy is not guaranteed and they do not form part of any contract.

Celebrating 30 years of successful Sales and Lettings in Merton

